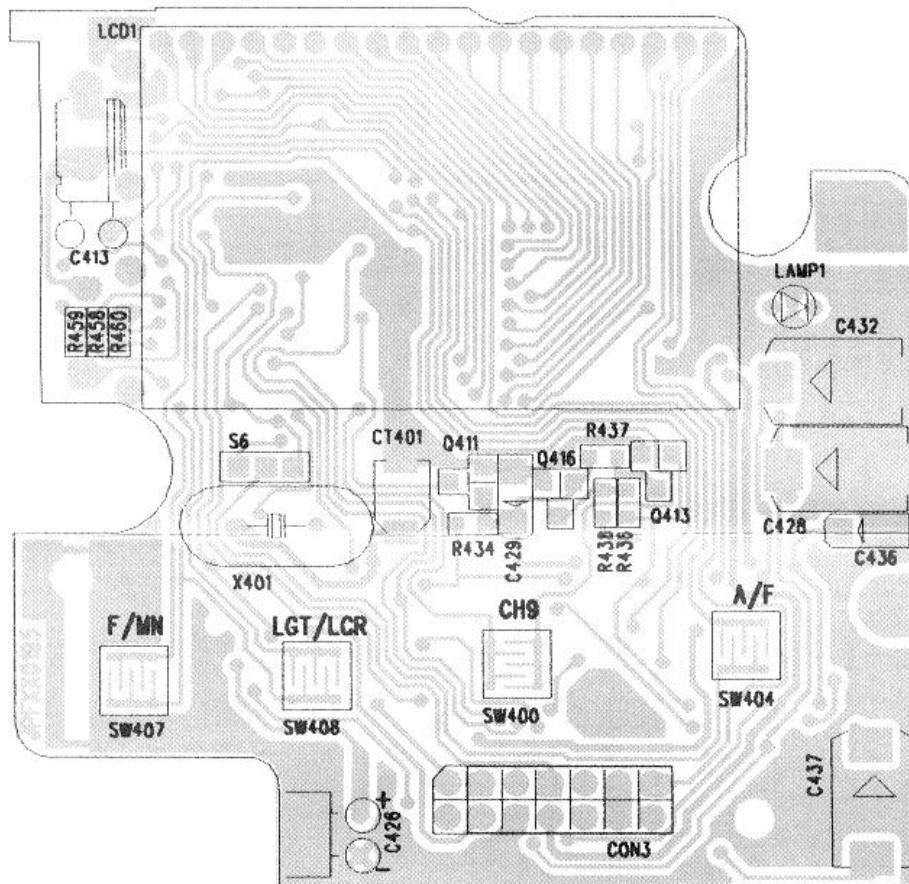
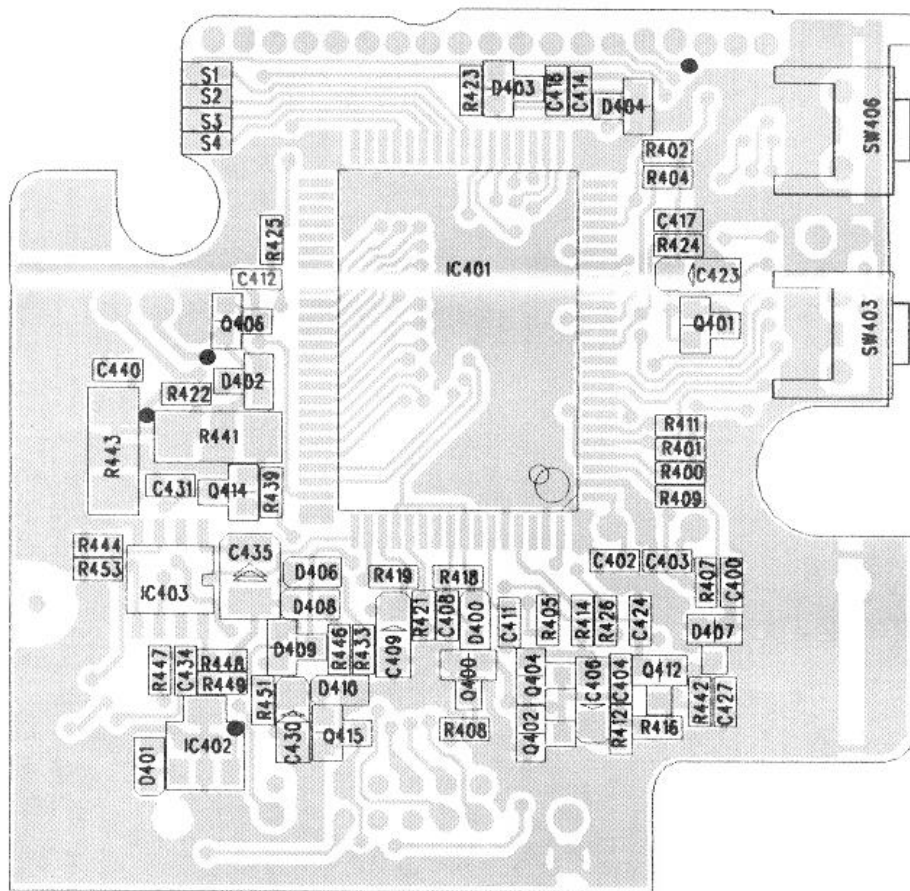
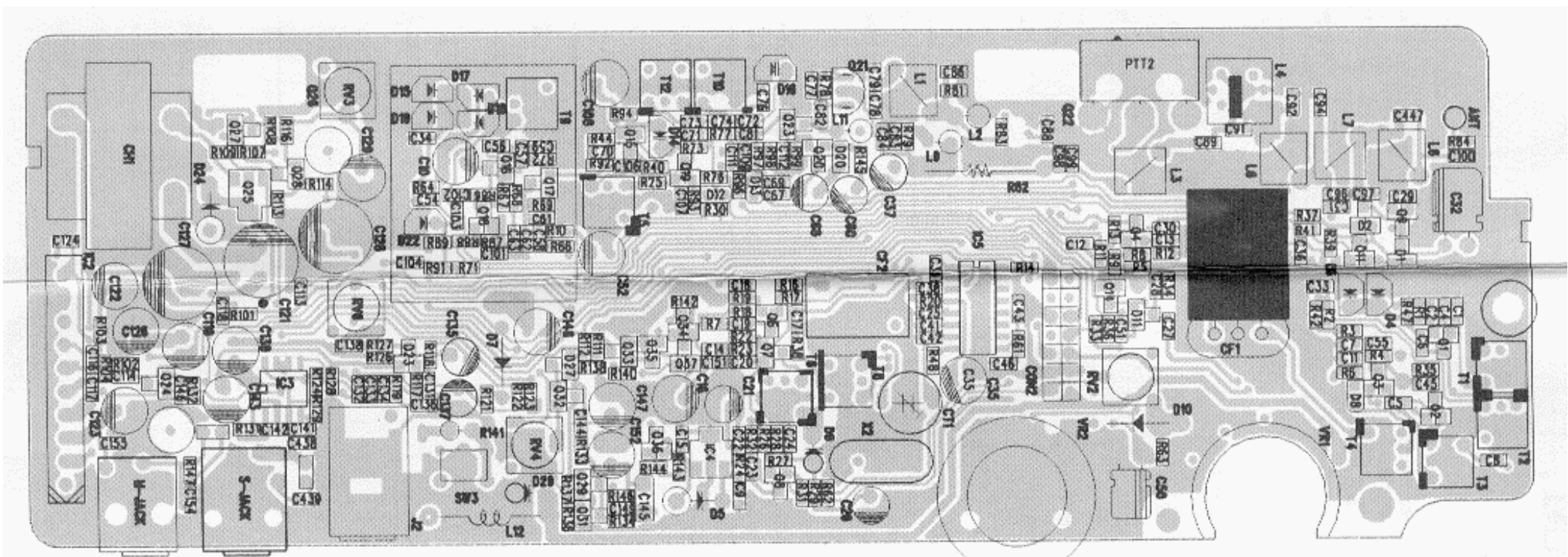


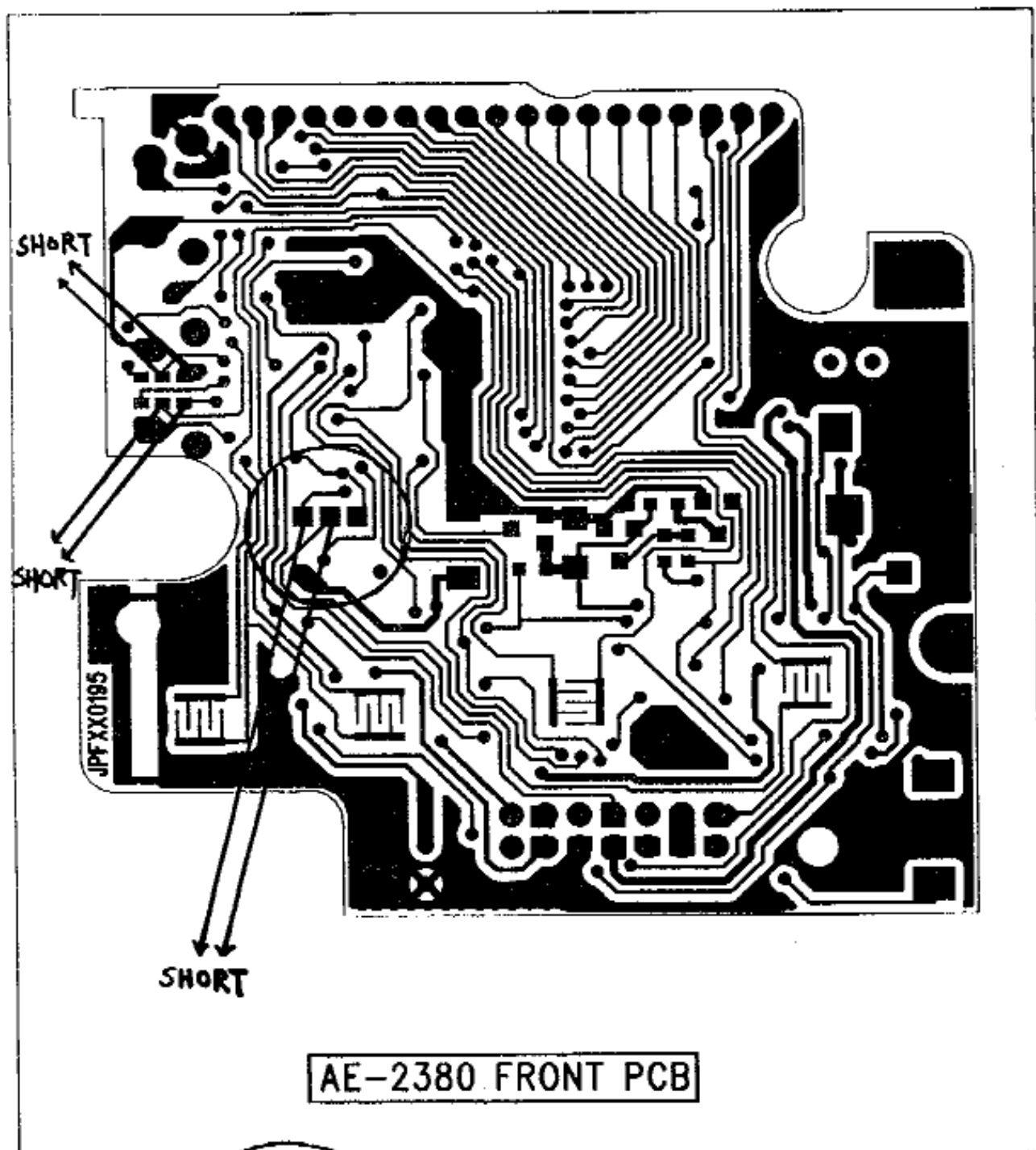
REV.	DATE	NAME	DESCRIPTION	CHECK
1				
UNIT SCALE SHEET 1 OF 1				
BUYER NAME : ALBRECHT				
MODEL NAME : AE 2380				
DRAWING NO. : AE2380SC.SCH				
JUL.20 '98				

FRONT PCB





AM/FM MODE



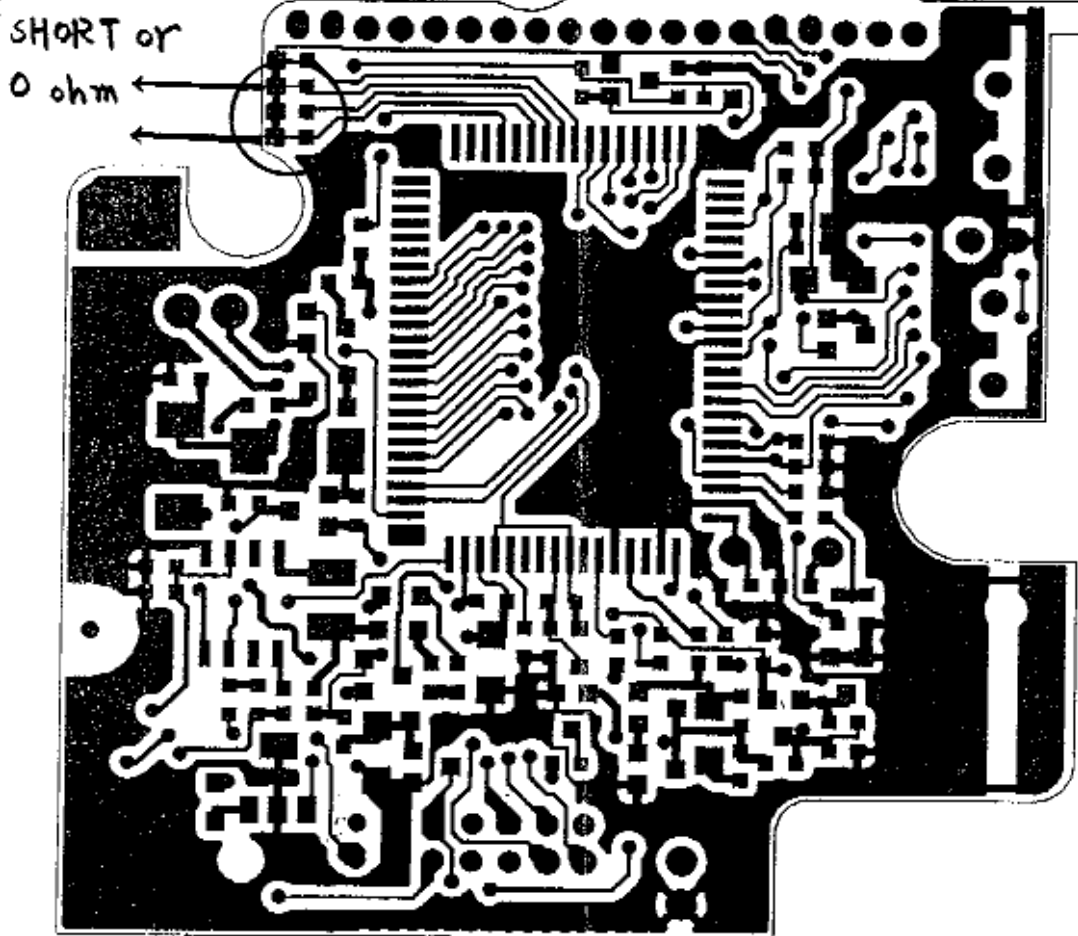
FM only

1-2 OPEN
2-3 SHORT

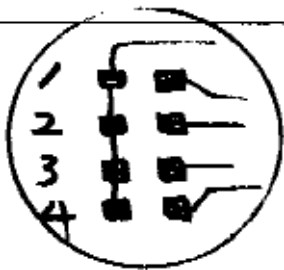
AM/FM

1-2 SHORT
2-3 OPEN

Channel Jumpers, drawing shows 80/12 channels

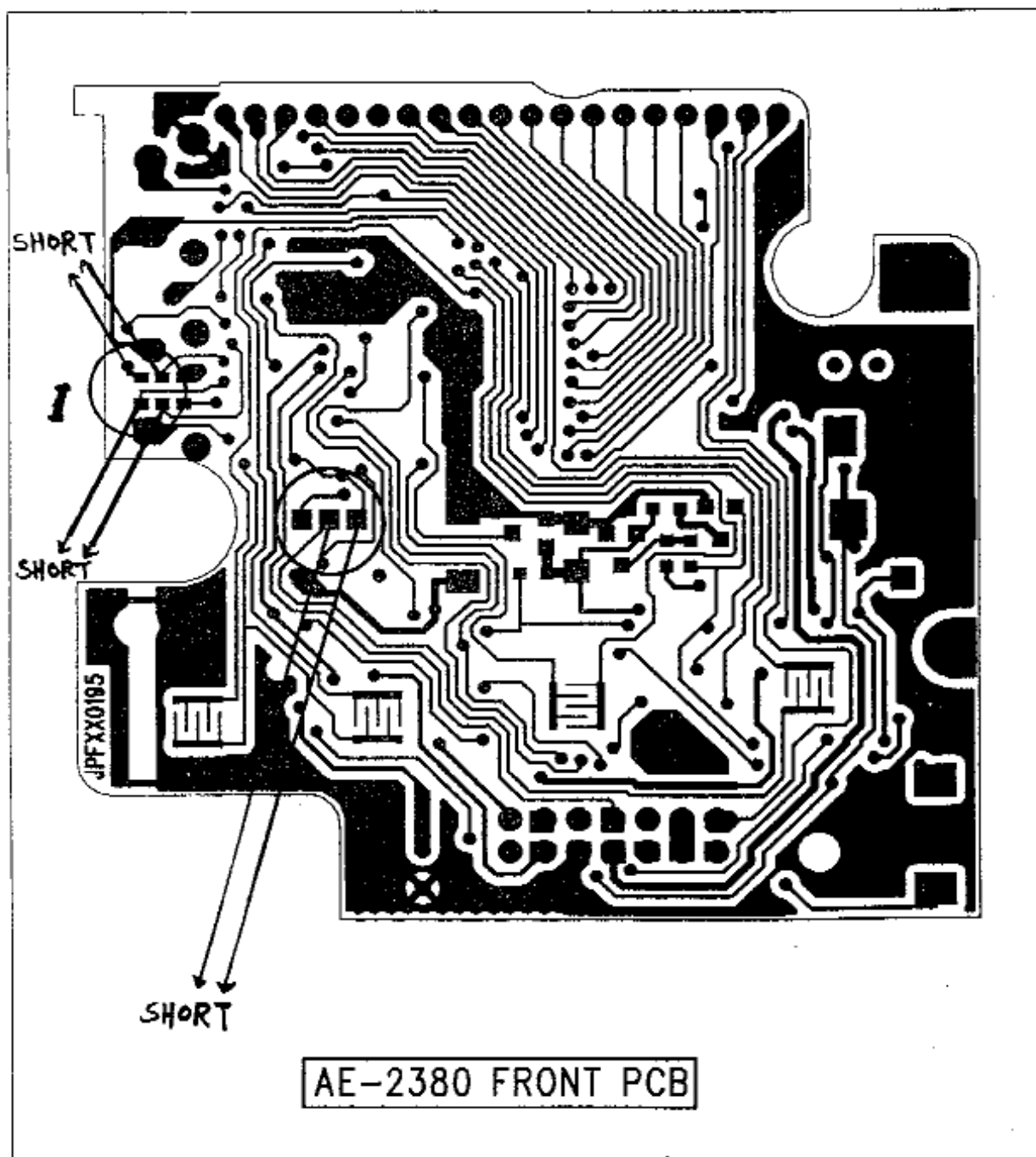


AE-2380 FRONT PCB



40 Channels	80/12 channels
FM 40, AM 40/FM 40,	AM/FM (AM 12/FM 80)
1 - OPEN	1 - OPEN
2 - SHORT	2 - OPEN
3 - OPEN	3 - OPEN
4 - SHORT	4 - OPEN

FM ONLY MODE



FM ONLY

1-2 SHORT
2-3 OPEN

AM/FM (AM 40/FM 40, AM 12/FM 80)

1-2 OPEN
2-3 SHORT

Declaration of Conformity

Herewith we declare that our products:

AE2380 and AE 2380 FM Hand Held CB Transceiver

correspond to our Technical Construction Files and Test Reports and are conform to the relevant essential requirements of the R&TTE-Directive 1999/5/EC, issued March 9, 1999. According to Annex II (receiving part of the product) and Annex IV (transmitting part of the product) of the R&TTE Directive we have involved the Notified Body 0499 (SEE) and mutually agreed to use the following european standards to demonstrate the conformity of the product:

Radio and Spectrum engineering parameters: ETS 300 135
Additional parameters for AM (Germany only) RegTP 222 ZV 104 /
RegTP SSB LA / NÖ 102
Electromagnetic Compatibility EMC: ETS 300 680 parts 1 and 2
Electrical safety (without application of voltage limits according to Art. 3
(1) (a) of R&TTE Direktive): IEC 60 950

Version differences: AE 2380: 80 Channels FM, 12 Channels AM
Use of this version is restricted to Germany (Individual licence required)

AE 2380 FM: 40 Channels FM according to CEPT recommendations. Use is free of charge and allowed in all EU member states + Switzerland and Norway.

Company, placing the product on the market:

Name: Albrecht Electronic GmbH
Address: Dovenkamp 11
D-22952 Lütjensee

Contact person: Dipl.-Phys. Wolfgang Schnorrenberg

Date: 02.10.2000



Wolfgang Schnorrenberg
Albrecht Electronic GmbH